

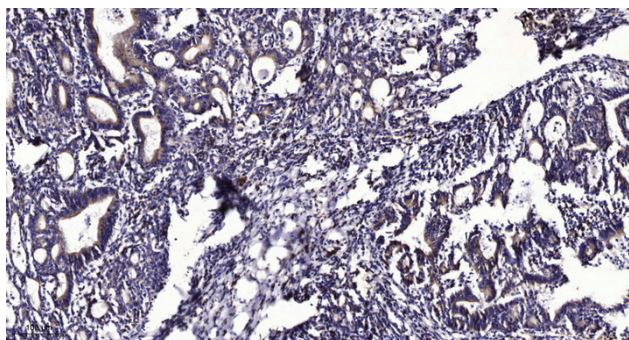


KIAA0649 rabbit pAb

Catalog No	YP-Ab-12496
Isotype	IgG
Reactivity	Human;Mouse;Rat
Applications	WB;ELISA;IHC
Gene Name	PPP1R26 KIAA0649
Protein Name	KIAA0649
Immunogen	Synthesized peptide derived from human KIAA0649
Specificity	This antibody detects endogenous levels of Human,Mouse,Rat KIAA0649
Formulation	Liquid in PBS containing 50% glycerol, 0.5% BSA and 0.02% sodium azide.
Source	Polyclonal, Rabbit,IgG
Purification	The antibody was affinity-purified from rabbit serum by affinity-chromatography using specific immunogen.
Dilution	WB 1:500-2000;IHC-p 1:50-300; ELISA 2000-20000
Concentration	1 mg/ml
Purity	≥90%
Storage Stability	-20°C/1 year
Synonyms	Protein phosphatase 1 regulatory subunit 26
Observed Band	
Cell Pathway	Nucleus, nucleolus .
Tissue Specificity	Ubiquitous in normal tissues. Expressed in numerous adenocarcinoma cell lines.
Function	
Background	
matters needing attention	Avoid repeated freezing and thawing!
Usage suggestions	This product can be used in immunological reaction related experiments. For more information, please consult technical personnel.



Products Images



Immunohistochemical analysis of paraffin-embedded human Gastric adenocarcinoma. 1, Antibody was diluted at 1:200(4° overnight). 2, Tris-EDTA,pH9.0 was used for antigen retrieval. 3,Secondary antibody was diluted at 1:200(room temperature, 45min).